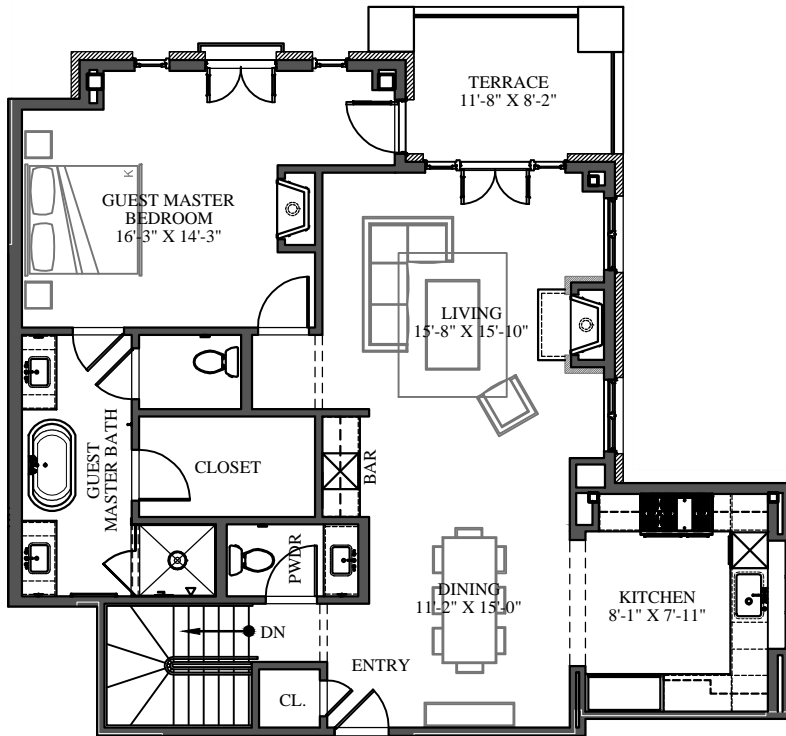
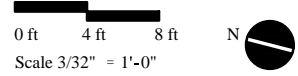


VILLAS AT  
**CORTINA**

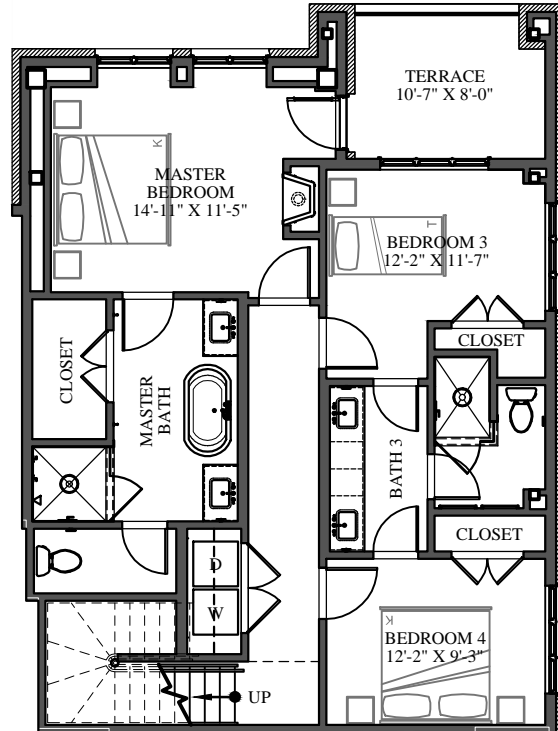
**Unit No.6**

2,419 Sq. Ft. - 4/3.5  
183 Sq. Ft. - Terrace



**Unit No.6 - Upper Level**

1,351 Sq. Ft. Conditioned Space  
91 Sq. Ft. Terrace Space



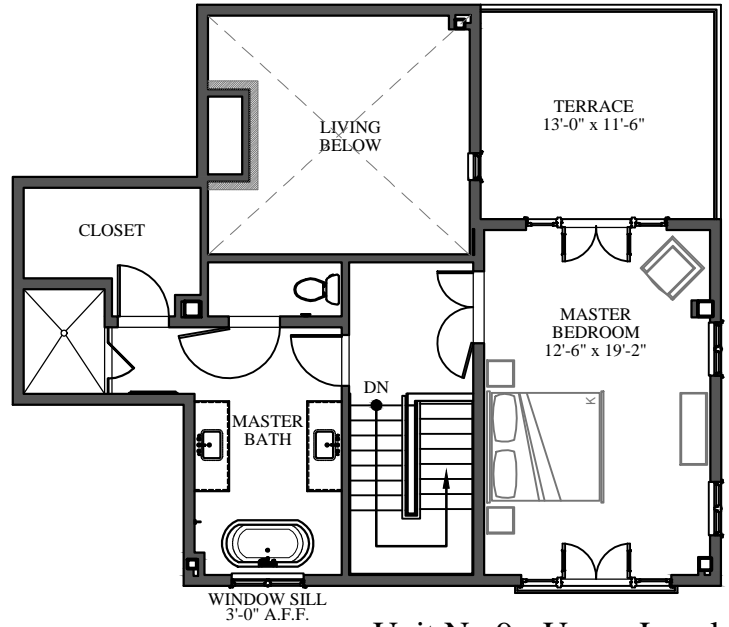
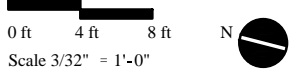
**Unit No.6 - Lower Level**

1,068 Sq. Ft. Conditioned Space  
92 Sq. Ft. Terrace Space

VILLAS AT  
**CORTINA**

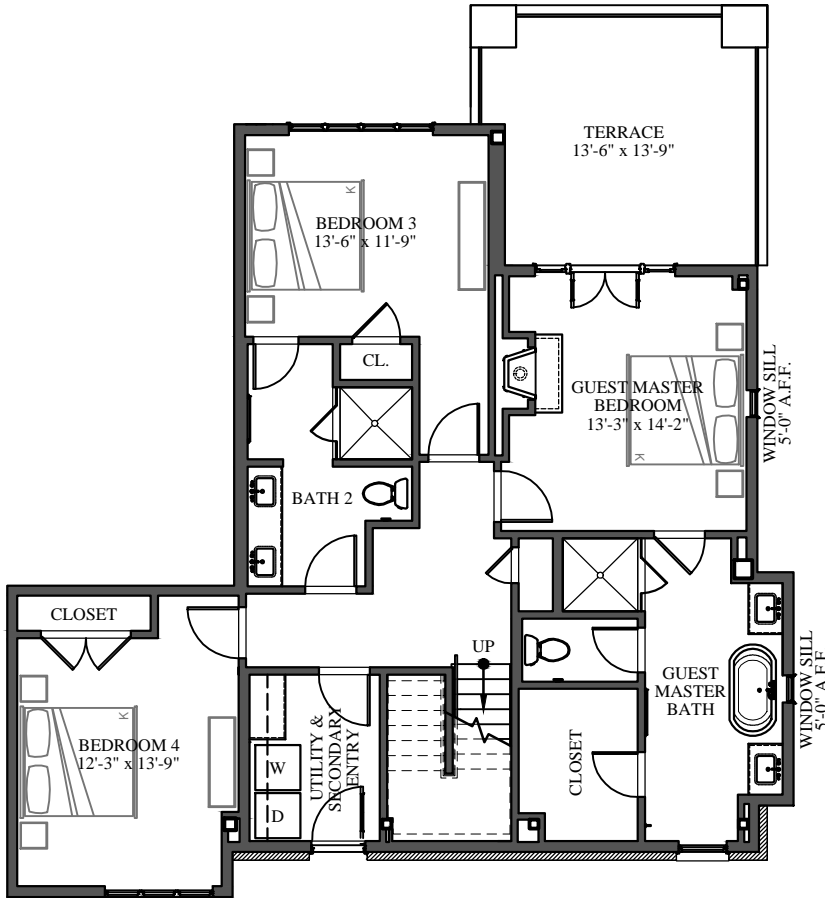
**Unit No.9**

3,437 Sq. Ft. - 4/3.5  
529 Sq. Ft. - Terrace



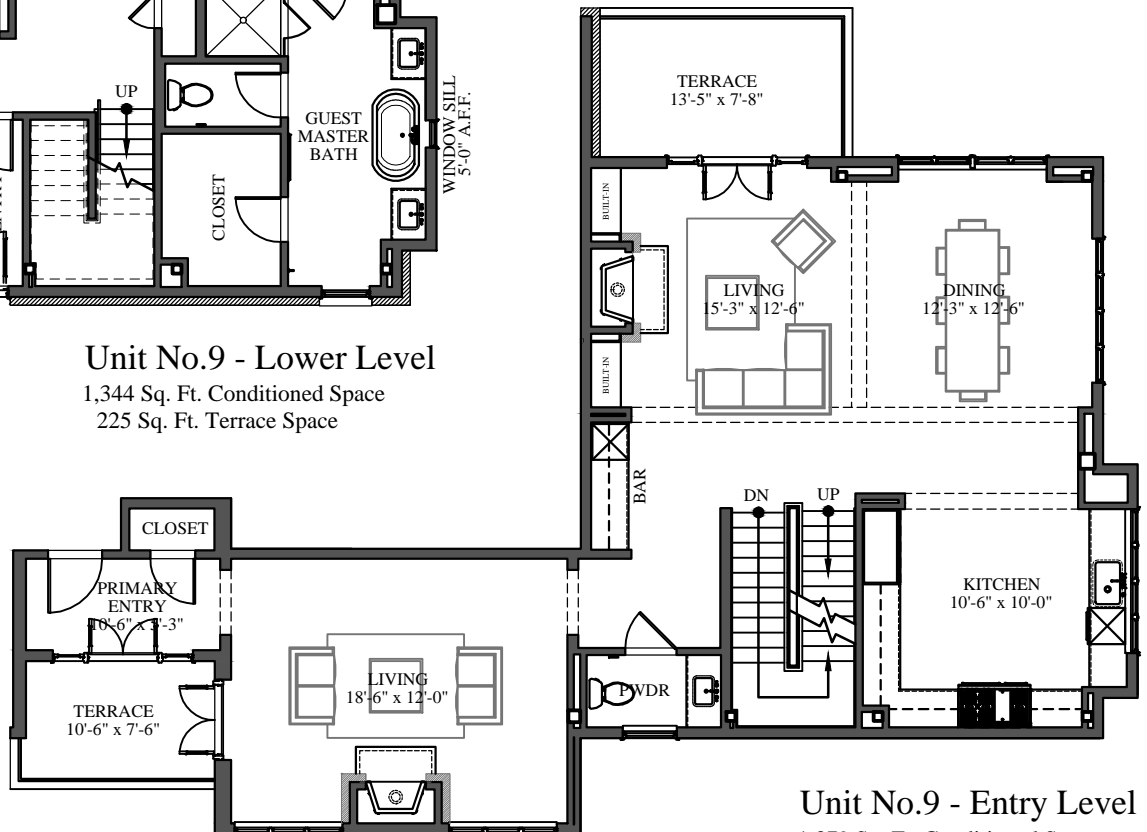
**Unit No.9 - Upper Level**

714 Sq. Ft. Conditioned Space  
170 Sq. Ft. Terrace Space



**Unit No.9 - Lower Level**

1,344 Sq. Ft. Conditioned Space  
225 Sq. Ft. Terrace Space



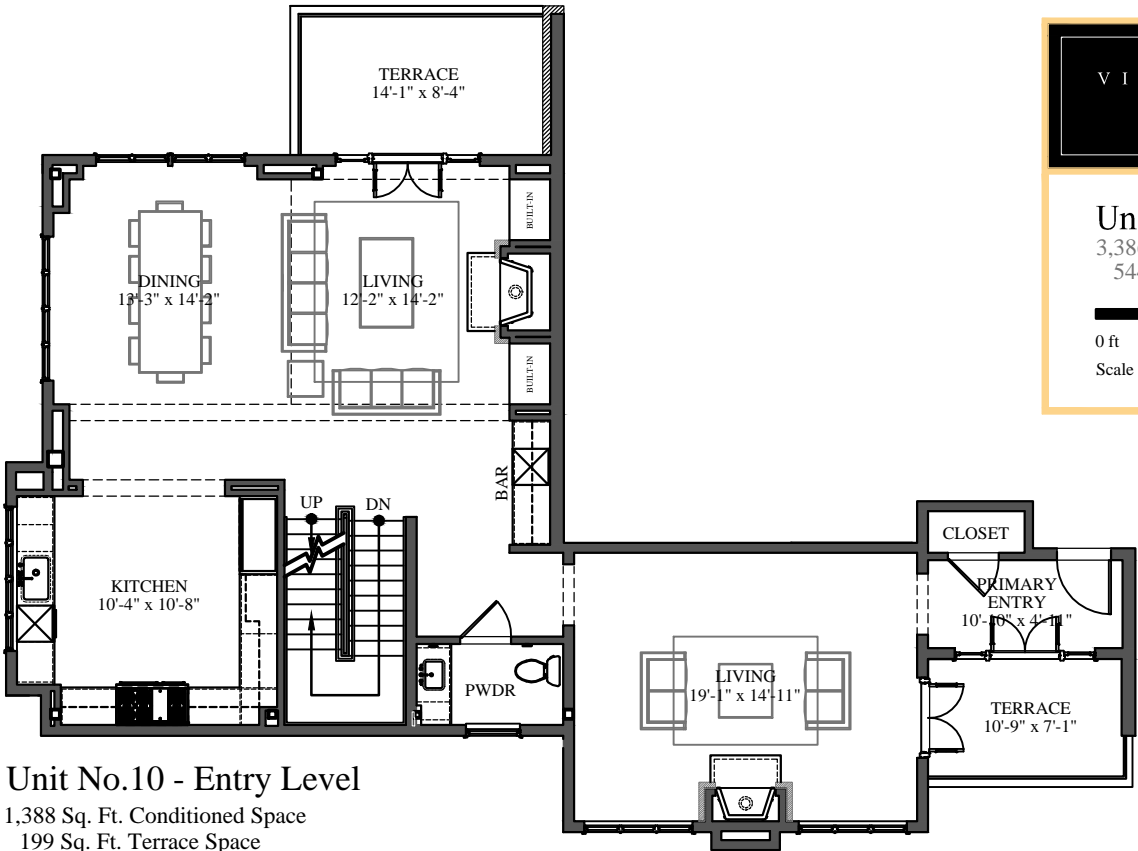
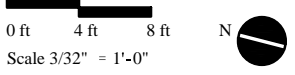
**Unit No.9 - Entry Level**

1,379 Sq. Ft. Conditioned Space  
134 Sq. Ft. Terrace Space

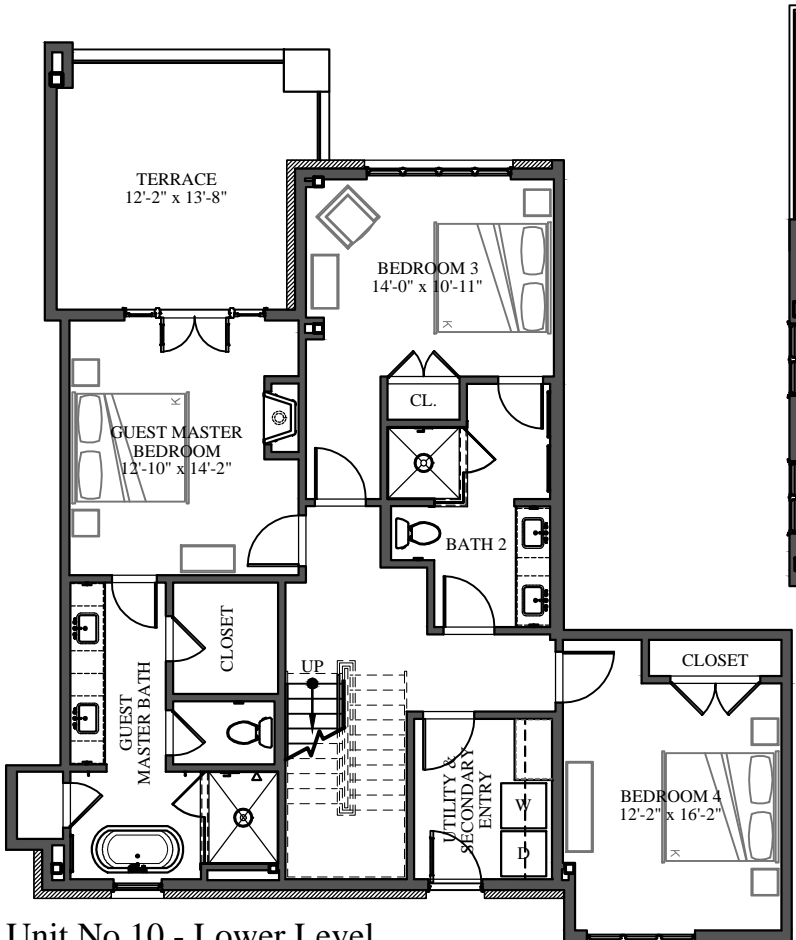
VILLAS AT  
**CORTINA**

**Unit No.10**

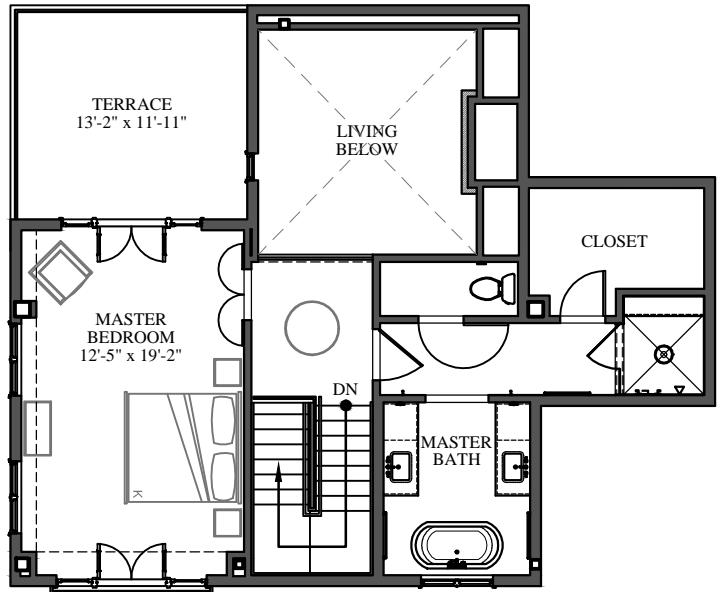
3,386 Sq. Ft. - 4/3.5  
544 Sq. Ft. - Terrace



**Unit No.10 - Entry Level**  
1,388 Sq. Ft. Conditioned Space  
199 Sq. Ft. Terrace Space



**Unit No.10 - Lower Level**  
1,291 Sq. Ft. Conditioned Space  
178 Sq. Ft. Terrace Space



**Unit No.10 - Upper Level**  
707 Sq. Ft. Conditioned Space  
167 Sq. Ft. Terrace Space

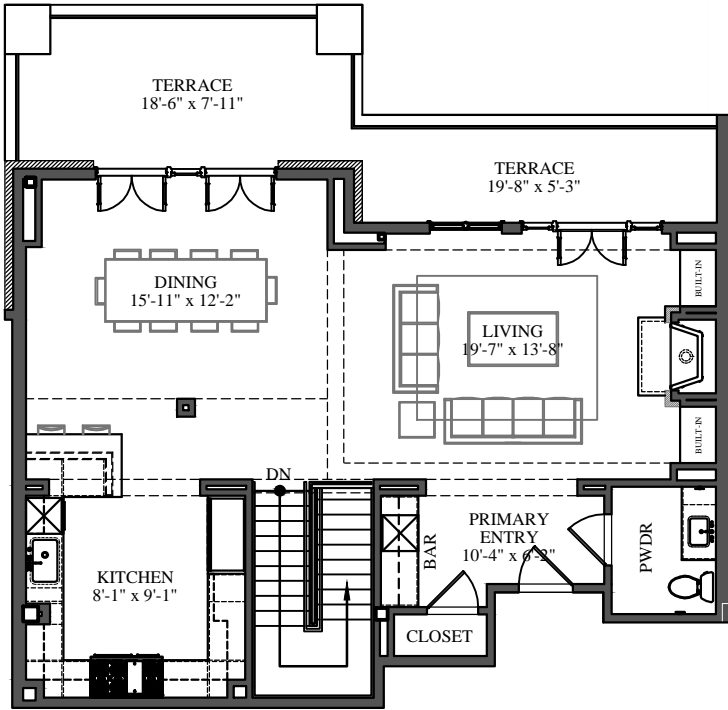
*The owner reserves the right to make modifications and changes to the information contained herein. Dimensions, sizes, specifications, layouts and materials are approximate only and subject to change without notice, pricing and (or) availability of any unit. This is not an offer to sale. Any sale requires a binding purchase and sale agreement.*

VILLAS AT  
**CORTINA**

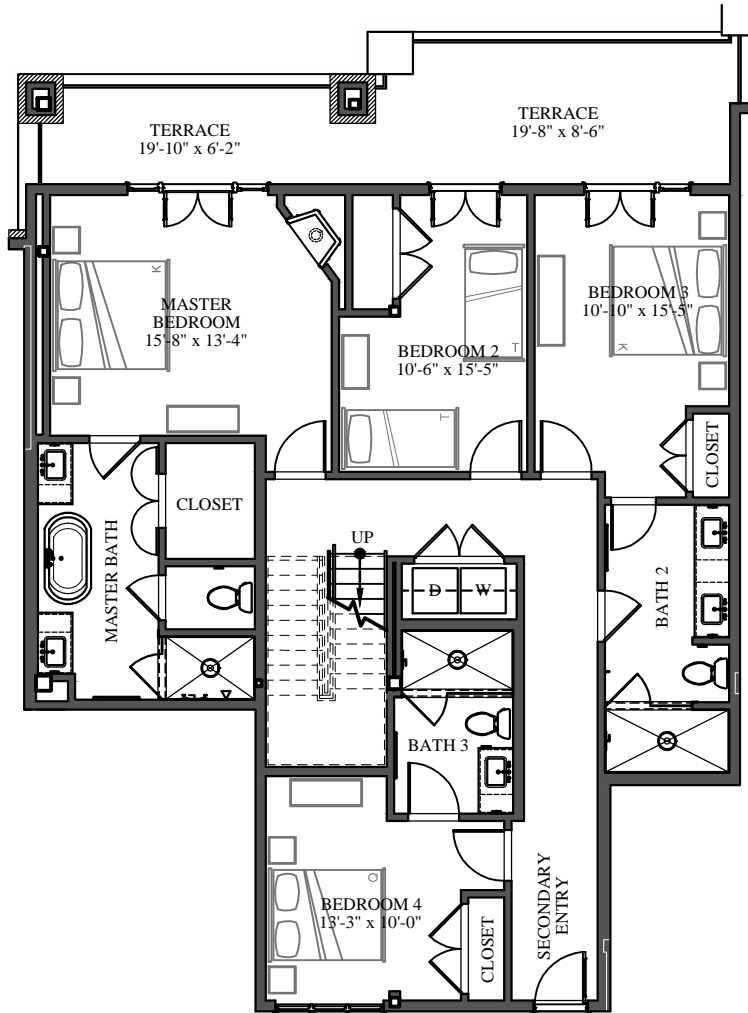
**Unit No.11**  
2,565 Sq. Ft. - 4/3.5  
565 Sq. Ft. - Terrace

0 ft 4 ft 8 ft N

Scale 3/32" = 1'-0"



**Unit No.11 - Upper Level**  
1,050 Sq. Ft. Conditioned Space  
287 Sq. Ft. Terrace Space



**Unit No.11 - Lower Level**  
1,515 Sq. Ft. Conditioned Space  
278 Sq. Ft. Terrace Space

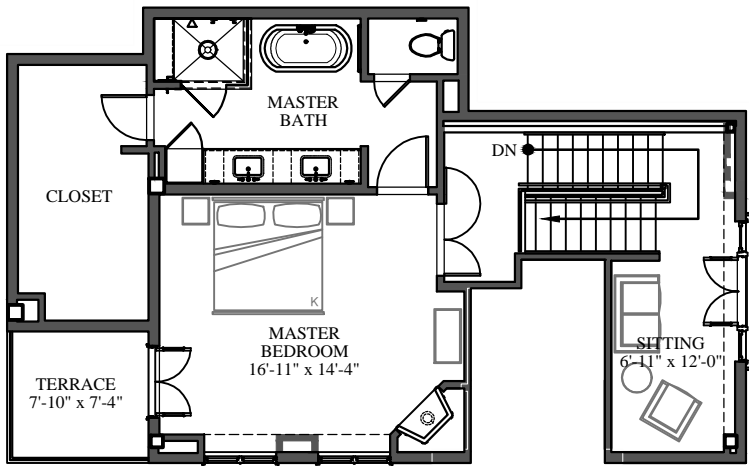
*The owner reserves the right to make modifications and changes to the information contained herein. Dimensions, sizes, specifications, layouts and materials are approximate only and subject to change without notice, pricing and (or) availability of any unit. This is not an offer to sale. Any sale requires a binding purchase and sale agreement.*

VILLAS AT  
**CORTINA**

**Unit No.12**  
3,106 Sq. Ft. - 4/3.5/Flex  
380 Sq. Ft. - Terrace

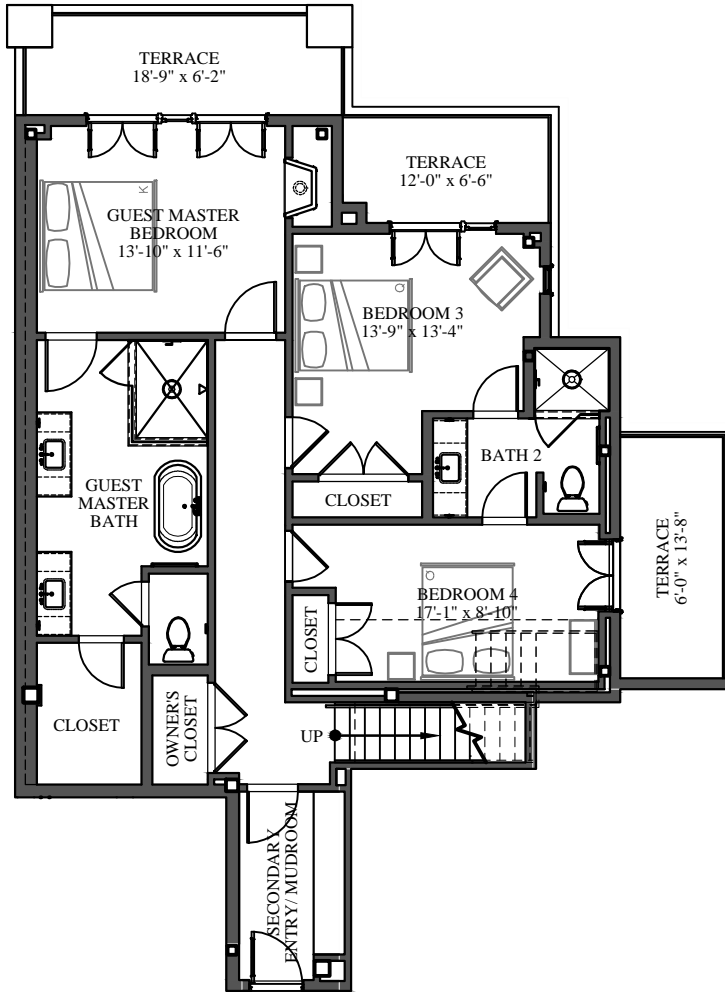
0 ft 4 ft 8 ft N

Scale 3/32" = 1'-0"



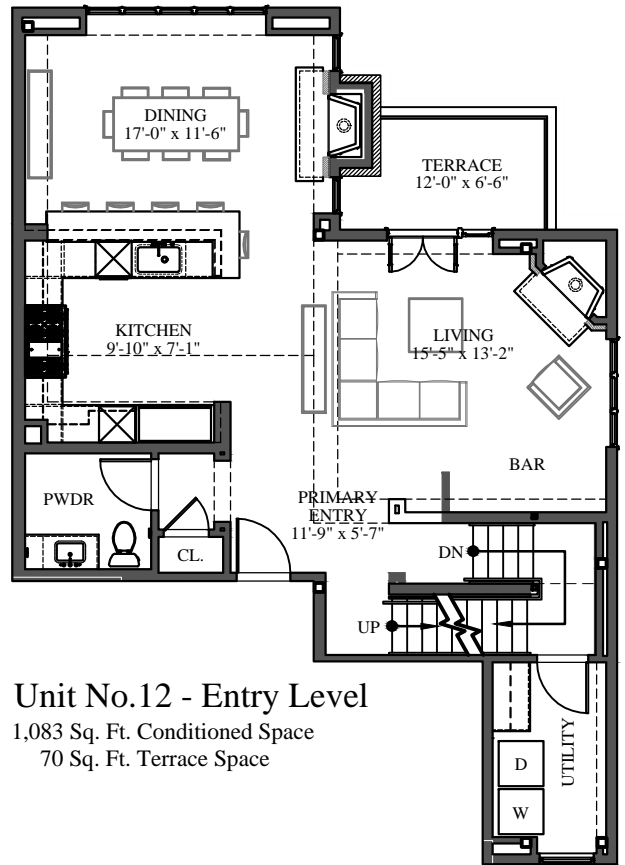
**Unit No.12 - Upper Level**

817 Sq. Ft. Conditioned Space  
61 Sq. Ft. Terrace Space



**Unit No.12 - Lower Level**

1,206 Sq. Ft. Conditioned Space  
249 Sq. Ft. Terrace Space



**Unit No.12 - Entry Level**

1,083 Sq. Ft. Conditioned Space  
70 Sq. Ft. Terrace Space

*The owner reserves the right to make modifications and changes to the information contained herein. Dimensions, sizes, specifications, layouts and materials are approximate only and subject to change without notice, pricing and (or) availability of any unit. This is not an offer to sale. Any sale requires a binding purchase and sale agreement.*